

Printing Specification

1. Specification

Models	1. Model Name:	UT91*
	2. Suffix:	EU
	3. Part No:	MFL72063653
	4. REV	REV02
SIZE	5. Number of pages	16
	6. Folded/Unfolded	3 Folded
	7. Trim size (W x H)_Unfolded (mm)	296 x 420
	8. Trim size (W x H)_folded (mm)	148 x 105
COVER	9. Bindery	-
	10. Color (Cover)	-
	11. Paper (Cover)	-
	12. Weight (cover) (g/m ²)	-
INNER	13. Color (inner)	4
	14. Paper (inner)	Wood free
	15. Weight (inner) (g/m ²)	80
	16. Coating	No
	17. Thomson	No
	18. Sub-material	No
	19. Languages	ENG (1)

1.1 Folding / Cover

Folded Step

Folded

Front: Barcode

Back:

2. Origin Notification

Changes the Country name.

Copyright © 2021 LG Electronics Inc. All Rights Reserved. Printed in Korea ← Printed in [Country Name in English]

Copyright © 2021 LG Electronics inc. Tous droits réservés. Imprimé en Corée ← Imprimé en(au) [Country Name in French]

www.lg.com

[blank] []

[Country Name] (ENG/FRE)	
LGERS / LGEMX :	Printed in Mexico Imprimé au Mexique
LGEKR :	Printed in Korea Imprimé en Corée
LGEMA :	Printed in Poland Imprimé en Pologne
LGEND :	Printed in China Imprimé en Chine
LGEIN :	Printed in Indonesia Imprimé en Indonésie
Brazil :	Printed in [Each Country name] [Image] (LGEAZ production only)
Others :	Each Country name.

NOTE

[Restriction of Hazardous Substances]
Hazardous substances on this product should be satisfied by substance regulation of Level A-I, A-II, SVHC according to LG(52)B-5011 standard. Especially, Part should be followed and controlled the following specification.

(1) Hazardous substances test report should be submitted when part certification test and first mass production.

(2) Especially, Don't use or contain lead (Pb) and cadmium (Cd) in ink.

INK REQUIREMENT FOR EU

(1) The amount of MOAH/MOSH must be less than 0.1% of the weight of the INK used.

*MOAH(Mineral Oil Aromatic Hydrocarbons) : Consisting of 1 to 7 aromatic cycles

*MOSH(Mineral Oil Saturated Hydrocarbons) : Consisting of 16 to 35 carbon atoms

(2) From 01 January 2025 : Ban on the use of MOAH in INK up to a limit of one part per million(1ppm) for compounds of 3 to 7 aromatic cycles

3. History

Rev. Number	Date	Description	ECO Number	Owner	
REV07					
REV06					
REV05					
REV04					
REV03					
REV02	2024-04-18	To reflect new wall-mounted model name.	EKLO400394	Sohyeong.An	
REV01	2024-02-16	Changed the weight. (55UT91*)	DKLO200471	Sohyeong.An	
REV00	2024-01-12			Checked	Taeho.Bae
				Approved	Jongok.Kim
Rev. Number	Date	Description	ECO Number	Owner	Sohyeong.An



43UT91*

50UT91*

55UT91*

65UT91*

75UT91*



www.lg.com

	43/50"			a x 8 (M4 x L16)	
	55"			a x 8 (M4 x L16)	
	65"			a x 9 (M4 x L16)	
	75"			b x 8 (M4 x L20)	



43/50/55"

1

2

3

65/75"

1

2

3

4

5

6



1

43/50/55" **65"** **75"**

a x 4 **a x 5** **b x 4**

3

43/50/55" **65"** **75"**

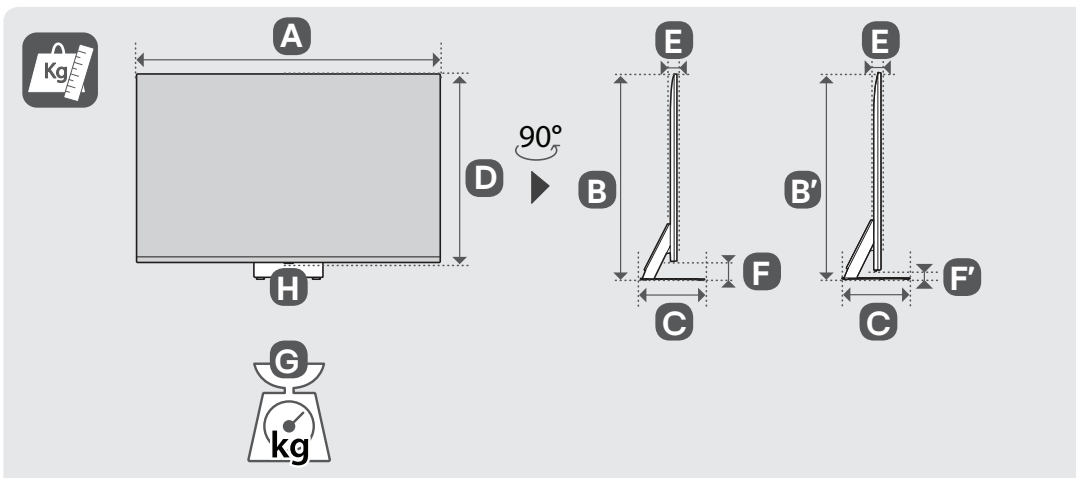
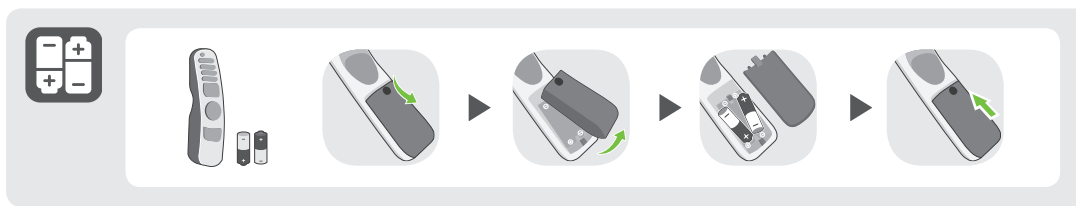
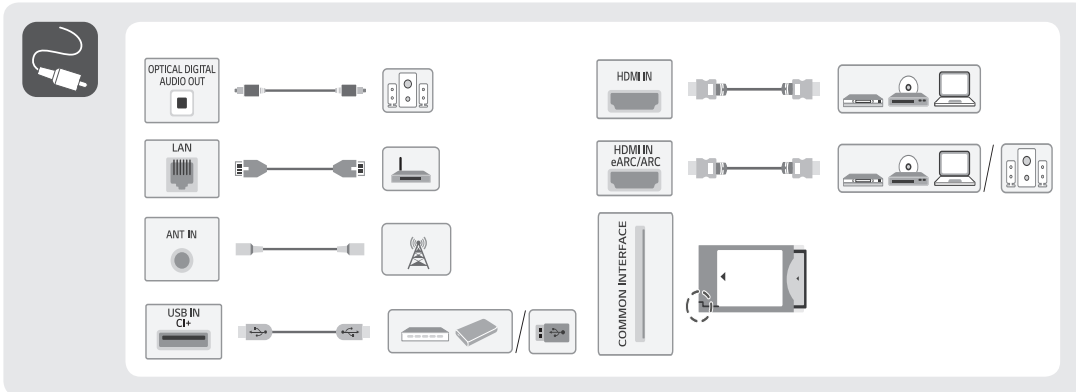
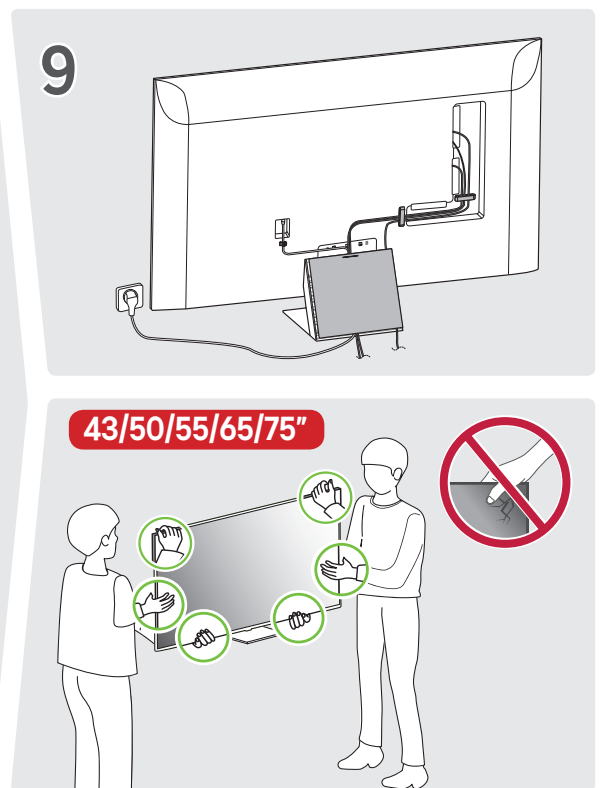
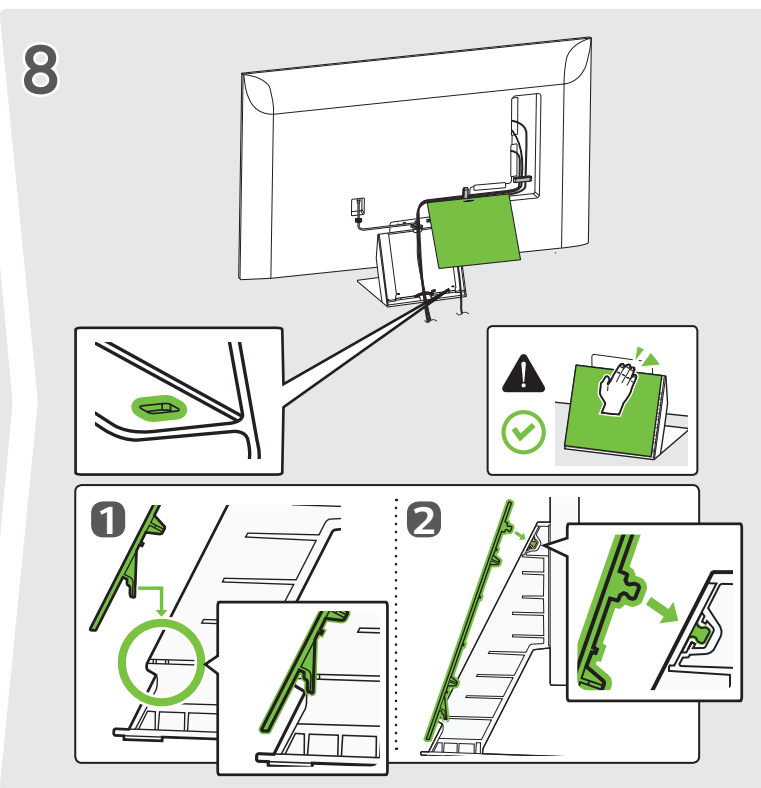
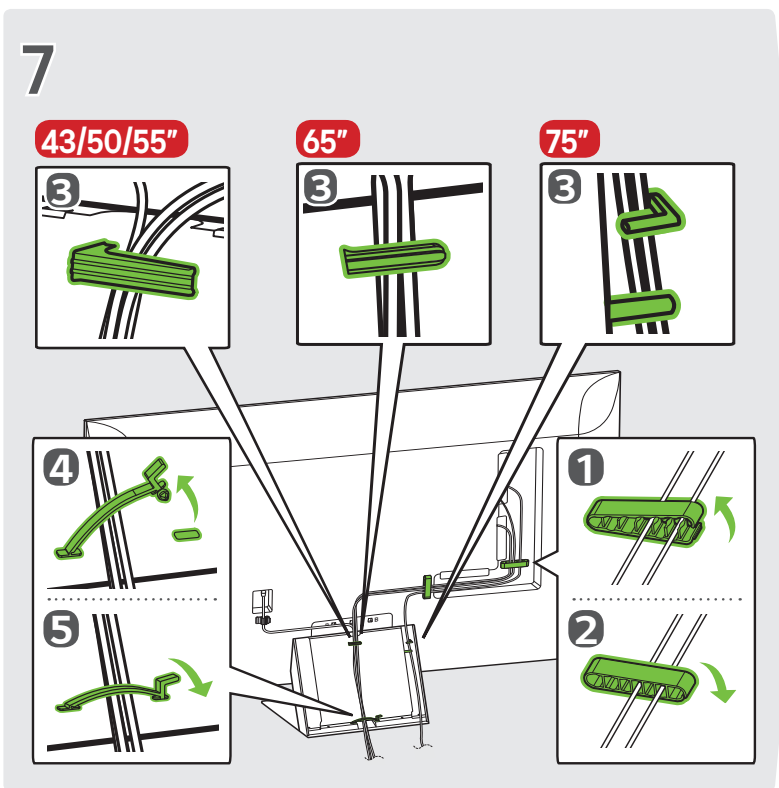
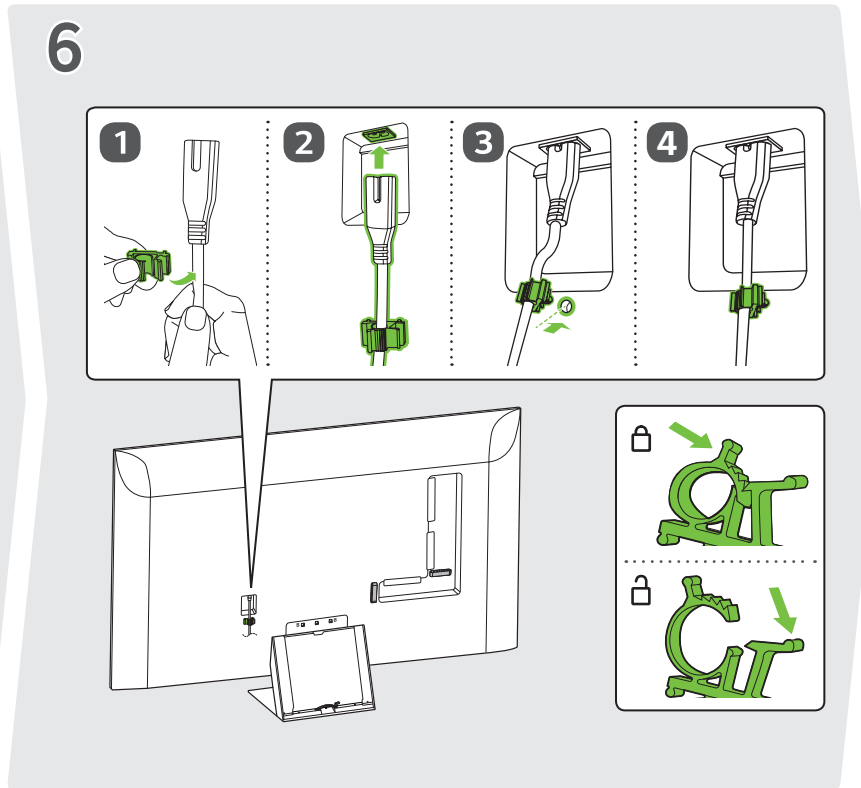
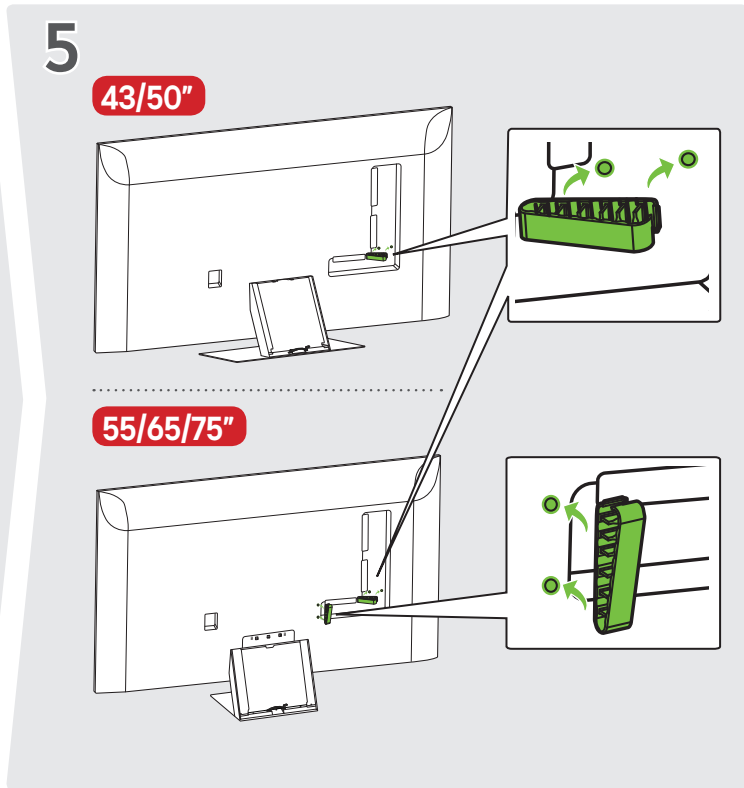
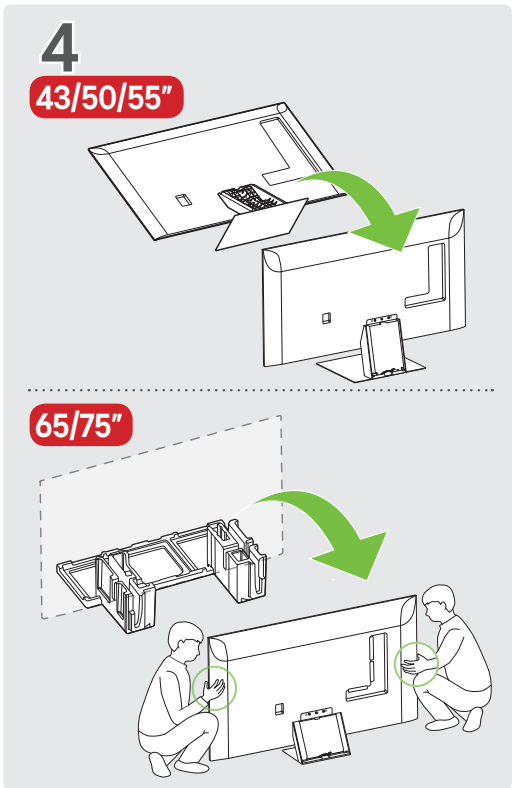
43" 75 mm	55" 70 mm	75" 77 mm
50" 69 mm	65" 69 mm	

F **F'**

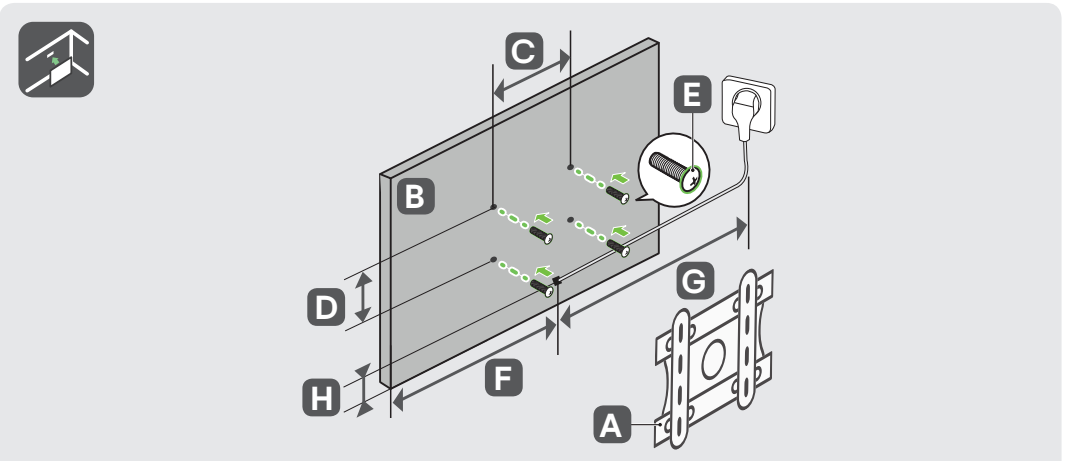
A **B**

43/50/55/65" **75"**

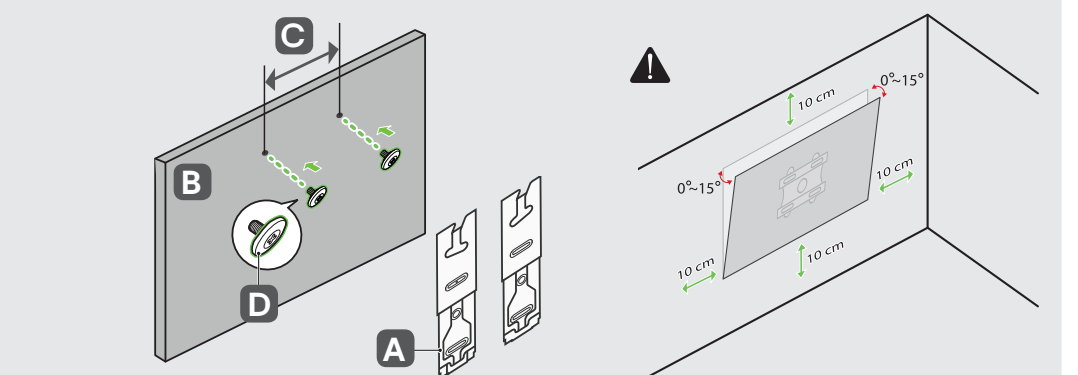
a x 4 **b x 4**



	A	B/B'	C	D	E	F/F'	G	G-H
	(mm)							(kg)
43UT91*	968	640 / -	260	565	297	75 / -	13.1	9.3
50UT91*	1123	721 / -	260	652	297	69 / -	16.8	13.0
55UT91*	1236	786 / 746	260	716	297	70 / 30	18.8	15.0
65UT91*	1456	909 / 869	285	840	297	69 / 29	27.4	23.6
75UT91*	1677	1042 / 994	370	965	30.9	77 / 29	41.5	33.3



	A	B	C x D (mm)	E	F (mm)	G (m)	H (mm)
LSW240B	43UT91*	200 x 200	M6	287	364	≥1.5	190
MSW240	50UT91*						221
WB24GCB	55UT91*	300 x 300	M6	371	481	≥1.5	277
MSW240	55UT91*	300 x 300					295
WB24GCB	65UT91*	300 x 300					341
WB24GCB	75UT91*	400 x 300		532			



	A	B	C (mm)	D
WB21LMB		43UT91*	200	M6
		50UT91*		
		55UT91*	300	
65UT91*				

*: 0~9, A~Z